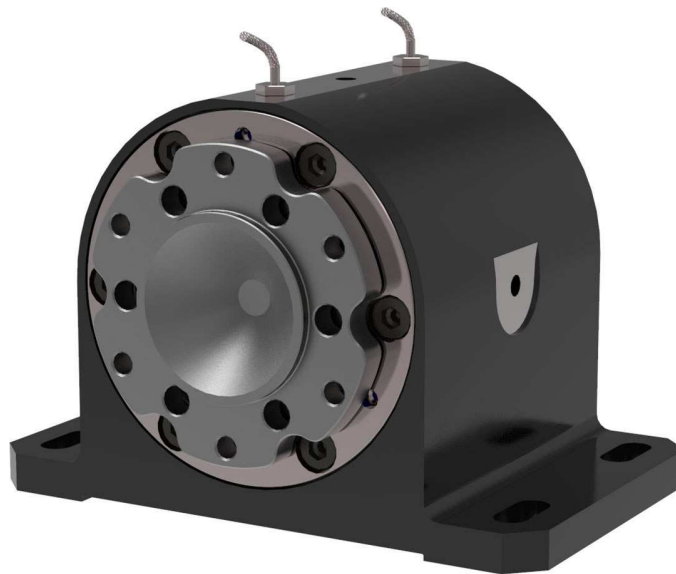


tZLE800

HIGH SPEED INTERMEDIATE BEARING



DESCRIPTION

The tZLE800 intermediate bearing bears the support loads, thereby reducing the loading on the rest of the test bed. The high quality bearings used guarantee precise running. The flanges of the intermediate bearing tZLE800 allow the direct application of several shaft types of the t70x and t80x series as well as couplings from the t600, t1000 and t2000 series. The tempered variant of the tZLE800 is suitable for use at temperatures from -40°C to +150°C.

NAMING

The product is named according to the following convention:

tZLE800-CVxx
└───┬───┘ joint size
└───┬───┘ product name

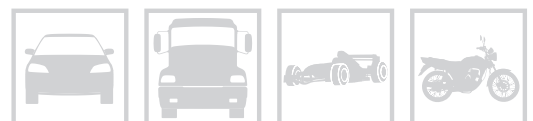
Example: tZLE800-CV15

OPERATING RANGE

Torque: up to 450 Nm
Speed: up to 20000 rpm

BENEFITS

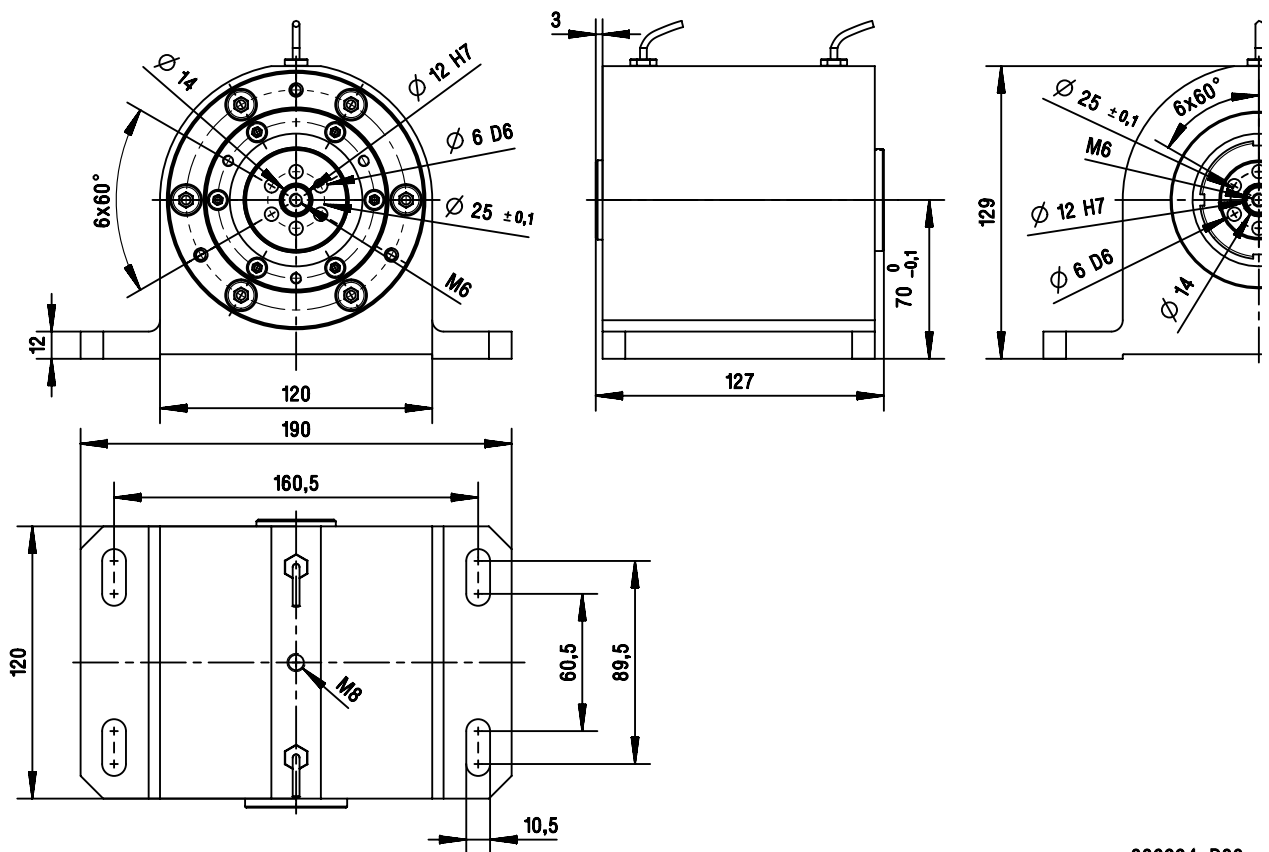
- high speed
- precise running
- reduced stress on unit under test and dynamometer
- exchangeable flanges for different CV-shaft sizes and coupling types
- permanently lubricated bearing
- integrated temperature measurement points



tZLE800

HIGH SPEED INTERMEDIATE BEARING

tZLE800		
Installed length	[mm]	127
Weight m	[kg]	12.45
Maximum speed n_{max}	[rpm]	20000
Inertia J	[kgm ²]	3.73E-04
Minimum bearing temperature ϑ_{min}	[°C]	-30
Maximum bearing temperature ϑ_{max}	[°C]	+60

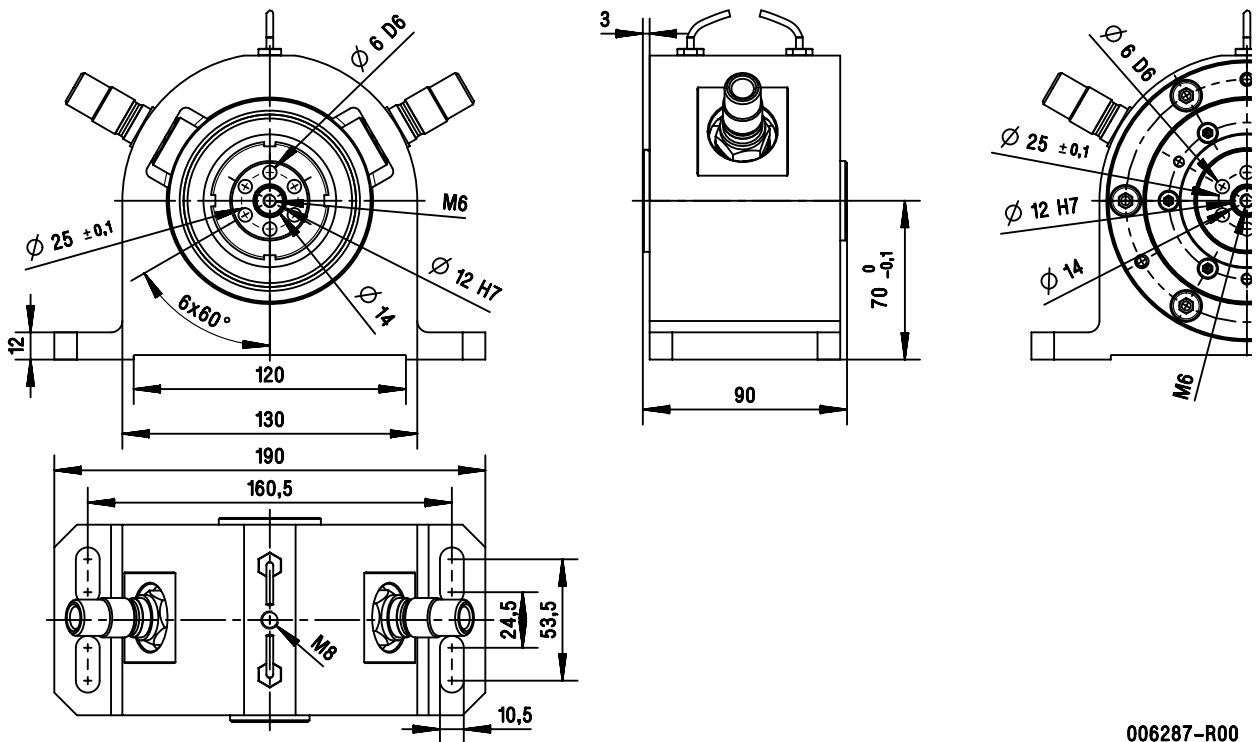


006224-R00

tZLE800

HIGH SPEED INTERMEDIATE BEARING

Tempered tZLE800		
Installed length	[mm]	90
Weight m	[kg]	9.21
Maximum speed n_{max}	[rpm]	20000
Inertia J	[kgm ²]	2.84E-04
Minimum bearing temperature ϑ_{min}	[°C]	-30
Maximum bearing temperature ϑ_{max}	[°C]	+60
Minimal ambient temperature with tempering ϑ_{min}	[°C]	-40
Maximum ambient temperature with tempering ϑ_{max}	[°C]	+150



006287-R00