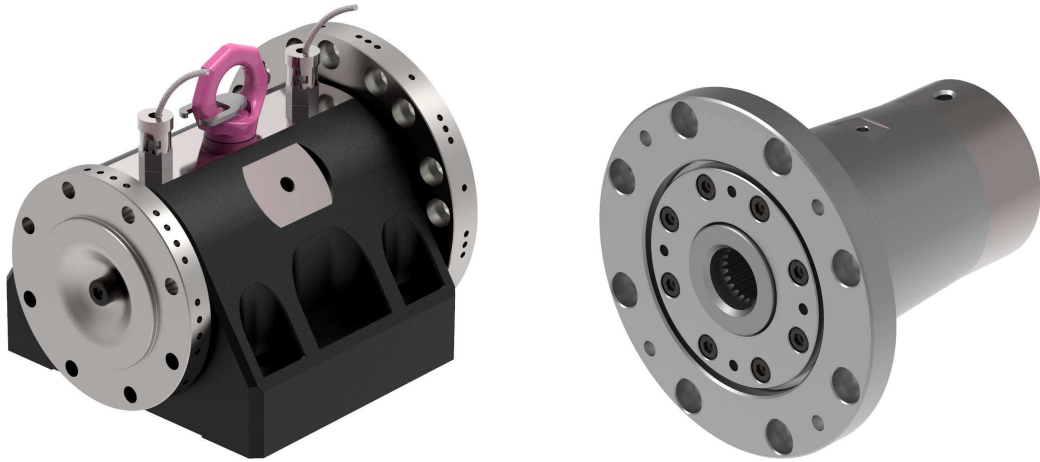


# tZLE950

## HIGH-SPEED INTERMEDIATE BEARING



### DESCRIPTION

The tZLE950 intermediate bearing bears the support loads, thereby reducing the loading on the rest of the test bed. The high quality spindle bearings used guarantee precise running up to very high speeds. The customer-specific exchangeable adapters allow the use of several shaft types from the t700 and t800 series and couplings from the t600 and t1000 series. The variants bearing cartridge and pillow block allow the intermediate bearing to meet individual customer requirements.

### OPERATING RANGE

Torque: up to 1000 Nm  
Speed: up to 25000 rpm

### BENEFITS

- very high speeds
- precise running
- reduced stress on unit under test and dynamometer
- permanently lubricated bearing
- integrated temperature measurement points



# tZLE950

## HIGH-SPEED INTERMEDIATE BEARING



tZLE950 bearing cartridge D90		
Installed length $L$	[mm]	150
Maximum torque $T_{\max}$	[Nm]	1000
Maximum speed $n_{\max}$	[rpm]	25000
Inertia $J$	[kgm <sup>2</sup> ]	6.99E-04
Weight $m$	[kg]	6.93
Minimum bearing temperature $\vartheta_{\min}$	[°C]	0
Maximum bearing temperature $\vartheta_{\max}$	[°C]	+80

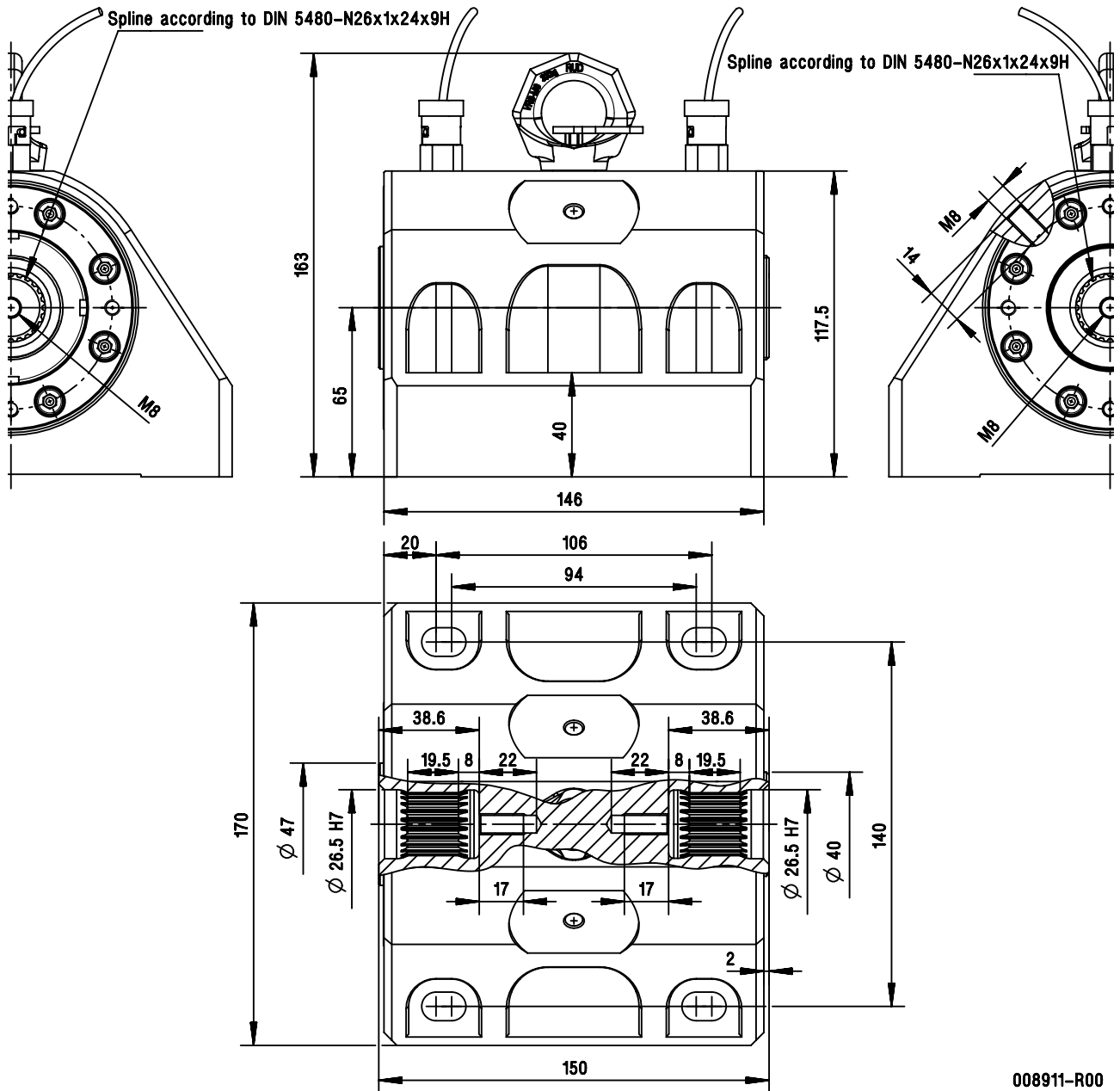
tZLE950 bearing cartridge D105		
Installed length $L$	[mm]	150
Maximum torque $T_{\max}$	[Nm]	1000
Maximum speed $n_{\max}$	[rpm]	25000
Inertia $J$	[kgm <sup>2</sup> ]	6.99E-04
Weight $m$	[kg]	9.94
Minimum bearing temperature $\vartheta_{\min}$	[°C]	0
Maximum bearing temperature $\vartheta_{\max}$	[°C]	+80

tZLE950 pillow block		
Installed length $L$	[mm]	150
Maximum torque $T_{\max}$	[Nm]	1000
Maximum speed $n_{\max}$	[rpm]	25000
Inertia $J$	[kgm <sup>2</sup> ]	6.99E-04
Weight $m$	[kg]	15.89
Minimum bearing temperature $\vartheta_{\min}$	[°C]	0
Maximum bearing temperature $\vartheta_{\max}$	[°C]	+80

# tZLE950

## HIGH-SPEED INTERMEDIATE BEARING



008911-R00

# tZLE950

## HIGH-SPEED INTERMEDIATE BEARING

